

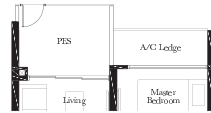
1-BEDROOM

TYPE A1-P

44 SQ M / 474 SQ FT

BLK 1

#02-01*, #02-04,
#02-05*, #02-09, #02-10*

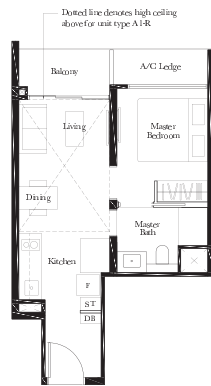


TYPE A1

42 SQ M / 452 SQ FT

BLK 1

#03-01* to #14-01*
#03-04 to #14-04
#03-05* to #14-05*
#03-09 to #14-09
#03-10* to #14-10*
#03-16 to #14-16



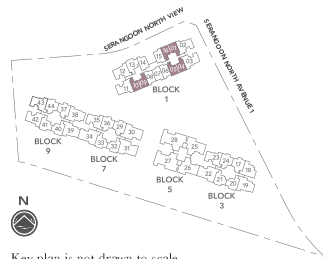
TYPE A1-R

53 SQ M / 570 SQ FT

Including strata void area of 11 sq m / 118 sq ft
above living and dining
Approximate 4.5 m floor to ceiling
height at living and dining

BLK 1

#15-01*, #15-04, #15-05*,
#15-09, #15-10*, #15-16



Key plan is not drawn to scale



AREA INCLUDES AIR-CON & LEDGE, PRIVATE ENCLOSED SPACE (PES), BALCONY AND STRATA VOID AREA WHERE APPLICABLE. SOME UNITS ARE MIRROR IMAGES OF THE APARTMENT PLANS SHOWN IN THE BROCHURE. PLEASE REFER TO THE KEY PLAN FOR ORIENTATION. THE PLANS ARE SUBJECT TO CHANGE AS MAY BE APPROVED BY RELEVANT AUTHORITIES. ALL FLOOR PLANS ARE APPROXIMATE MEASUREMENTS ONLY AND ARE SUBJECT TO GOVERNMENT RESURVEY. THE BALCONY SHALL NOT BE ENCLOSED UNLESS WITH THE APPROVED BALCONY SCREEN. FOR AN ILLUSTRATION OF THE APPROVED BALCONY SCREEN, PLEASE REFER TO THE DIAGRAM ANNEXED HERETO AS "BALCONY SCREEN".

1-BEDROOM

TYPE A2-P

43 SQ M / 463 SQ FT

BLK 3

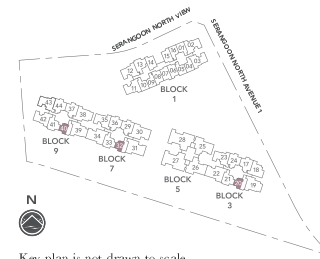
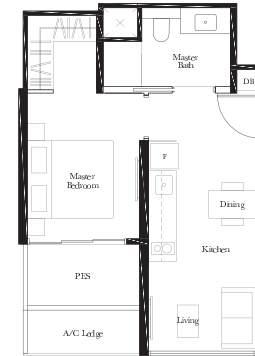
#02-20

BLK 7

#02-32

BLK 9

#01-40



Key plan is not drawn to scale



AREA INCLUDES AIR-CON & LEDGE, PRIVATE ENCLOSED SPACE (PES), BALCONY AND STRATA VOID AREA WHERE APPLICABLE. SOME UNITS ARE MIRROR IMAGES OF THE APARTMENT PLANS SHOWN IN THE BROCHURE. PLEASE REFER TO THE KEY PLAN FOR ORIENTATION. THE PLANS ARE SUBJECT TO CHANGE AS MAY BE APPROVED BY RELEVANT AUTHORITIES. ALL FLOOR PLANS ARE APPROXIMATE MEASUREMENTS ONLY AND ARE SUBJECT TO GOVERNMENT RESURVEY. THE BALCONY SHALL NOT BE ENCLOSED UNLESS WITH THE APPROVED BALCONY SCREEN. FOR AN ILLUSTRATION OF THE APPROVED BALCONY SCREEN, PLEASE REFER TO THE DIAGRAM ANNEXED HERETO AS "BALCONY SCREEN".

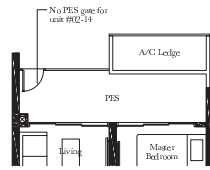
1-BEDROOM + STUDY

TYPE A3S-P

51 SQ M / 549 SQ FT

BLK 1

#02-06*, #02-08*, #02-14, #02-15*



TYPE A3S

48 SQ M / 517 SQ FT

BLK 1

#03-06* to #14-06*
#04-07 to #14-07
#03-08* to #14-08*
#03-14 to #14-14
#03-15* to #14-15*



TYPE A3S-R

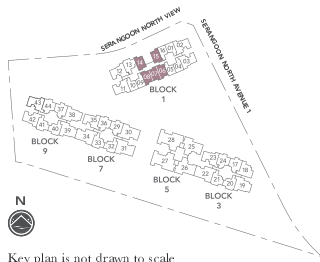
57 SQ M / 614 SQ FT

Including strata void area of 9 sq m / 97 sq ft above living

Approximate 4.5 m floor to ceiling height at living

BLK 1

#15-06*
#15-07
#15-08*
#15-14
#15-15*



AREA INCLUDES AIR-CON & LEDGE, PRIVATE ENCLOSED SPACE (PES), BALCONY AND STRATA VOID AREA WHERE APPLICABLE. SOME UNITS ARE MIRROR IMAGES OF THE APARTMENT PLANS SHOWN IN THE BROCHURE. PLEASE REFER TO THE KEY PLAN FOR ORIENTATION. THE PLANS ARE SUBJECT TO CHANGE AS MAY BE APPROVED BY RELEVANT AUTHORITIES. ALL FLOOR PLANS ARE APPROXIMATE MEASUREMENTS ONLY AND ARE SUBJECT TO GOVERNMENT RESURVEY. THE BALCONY SHALL NOT BE ENCLOSED UNLESS WITH THE APPROVED BALCONY SCREEN. FOR AN ILLUSTRATION OF THE APPROVED BALCONY SCREEN, PLEASE REFER TO THE DIAGRAM ANNEXED HERETO AS "BALCONY SCREEN".

2-BEDROOM

TYPE B1-P

62 SQ M / 667 SQ FT

BLK 1

#02-13*

BLK 3

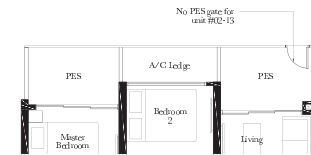
#02-21

BLK 7

#02-33

BLK 9

#01-41



TYPE B1

57 SQ M / 614 SQ FT

BLK 1

#03-13* to #14-13*

BLK 3

#03-20* to #14-20*, #03-21 to #14-21

BLK 7

#03-32* to #14-32*, #03-33 to #14-33

BLK 9

#02-40* to #14-40*, #02-41 to #14-41



TYPE B1-R

68 SQ M / 732 SQ FT

Including strata void area of 11 sq m / 118 sq ft above living and dining

Approximate 4.5 m floor to ceiling height at living and dining

BLK 1

#15-13*

BLK 3

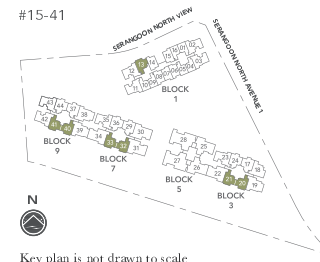
#15-20*

BLK 7

#15-32*

BLK 9

#15-41



AREA INCLUDES AIR-CON & LEDGE, PRIVATE ENCLOSED SPACE (PES), BALCONY AND STRATA VOID AREA WHERE APPLICABLE. SOME UNITS ARE MIRROR IMAGES OF THE APARTMENT PLANS SHOWN IN THE BROCHURE. PLEASE REFER TO THE KEY PLAN FOR ORIENTATION. THE PLANS ARE SUBJECT TO CHANGE AS MAY BE APPROVED BY RELEVANT AUTHORITIES. ALL FLOOR PLANS ARE APPROXIMATE MEASUREMENTS ONLY AND ARE SUBJECT TO GOVERNMENT RESURVEY. THE BALCONY SHALL NOT BE ENCLOSED UNLESS WITH THE APPROVED BALCONY SCREEN. FOR AN ILLUSTRATION OF THE APPROVED BALCONY SCREEN, PLEASE REFER TO THE DIAGRAM ANNEXED HERETO AS "BALCONY SCREEN".

2-BEDROOM

TYPE B1-R1

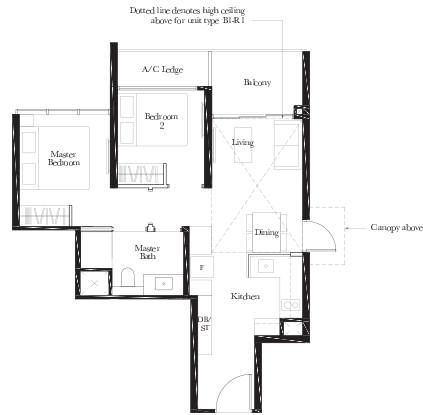
68 SQ M / 732 SQ FT

Including strata void area of 11 sq m / 118 sq ft above living and dining
Approximate 4.5 m floor to ceiling height at living and dining

BLK 3
#15-21

BLK 7
#15-33

BLK 9
#15-40*



2-BEDROOM + STUDY

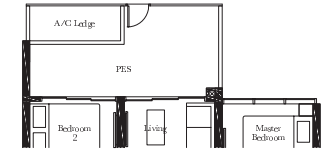
TYPE B2S-P

70 SQ M / 753 SQ FT

BLK 3
#02-17*, #02-24

BLK 7
#02-29*, #02-36

BLK 9
#02-37*, #02-44



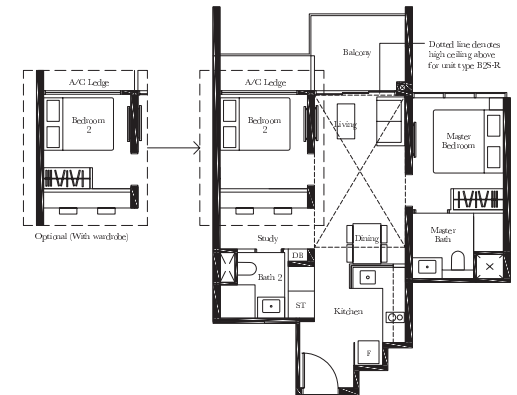
TYPE B2S

64 SQ M / 689 SQ FT

BLK 3
#03-17* to #14-17*
#03-24 to #14-24

BLK 7
#03-29* to #14-29*
#03-36 to #14-36

BLK 9
#03-37* to #14-37*
#03-44 to #14-44



TYPE B2S-R

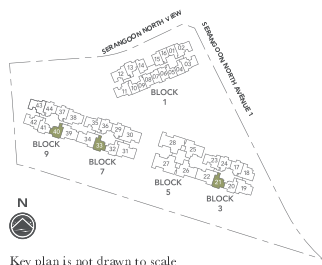
77 SQ M / 829 SQ FT

Including strata void area of 13 sq m / 140 sq ft above living and dining
Approximate 4.5 m floor to ceiling height at living and dining

BLK 3
#15-17*, #15-24

BLK 7
#15-29*, #15-36

BLK 9
#15-37*, #15-44



AREA INCLUDES AIR/CON (A/C) LEDGE, PRIVATE ENCLOSED SPACE (PES), BALCONY AND STRATA VOID AREA WHERE APPLICABLE. SOME UNITS ARE MIRROR IMAGES OF THE APARTMENT PLANS SHOWN IN THE BROCHURE. PLEASE REFER TO THE KEY PLAN FOR ORIENTATION. THE PLANS ARE SUBJECT TO CHANGE AS MAY BE APPROVED BY RELEVANT AUTHORITIES. ALL FLOOR PLANS ARE APPROXIMATE MEASUREMENTS ONLY AND ARE SUBJECT TO GOVERNMENT RESURVEY. THE BALCONY SHALL NOT BE ENCLOSED UNLESS WITH THE APPROVED BALCONY SCREEN. FOR AN ILLUSTRATION OF THE APPROVED BALCONY SCREEN, PLEASE REFER TO THE DIAGRAM ANNEXED HERETO AS "BALCONY SCREEN".



AREA INCLUDES AIR/CON (A/C) LEDGE, PRIVATE ENCLOSED SPACE (PES), BALCONY AND STRATA VOID AREA WHERE APPLICABLE. SOME UNITS ARE MIRROR IMAGES OF THE APARTMENT PLANS SHOWN IN THE BROCHURE. PLEASE REFER TO THE KEY PLAN FOR ORIENTATION. THE PLANS ARE SUBJECT TO CHANGE AS MAY BE APPROVED BY RELEVANT AUTHORITIES. ALL FLOOR PLANS ARE APPROXIMATE MEASUREMENTS ONLY AND ARE SUBJECT TO GOVERNMENT RESURVEY. THE BALCONY SHALL NOT BE ENCLOSED UNLESS WITH THE APPROVED BALCONY SCREEN. FOR AN ILLUSTRATION OF THE APPROVED BALCONY SCREEN, PLEASE REFER TO THE DIAGRAM ANNEXED HERETO AS "BALCONY SCREEN".

3-BEDROOM

TYPE C1-P

81 SQ M / 872 SQ FT

BLK 3
#02-23*

BLK 7
#02-35*

BLK 9
#01-42
#02-43*



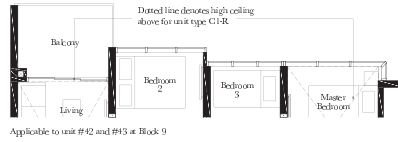
TYPE C1

74 SQ M / 797 SQ FT

BLK 3
#03-23* to #14-23*

BLK 7
#03-35* to #14-35*

BLK 9
#02-42 to #14-42
#03-43* to #14-43*



TYPE C1-R

97 SQ M / 1044 SQ FT

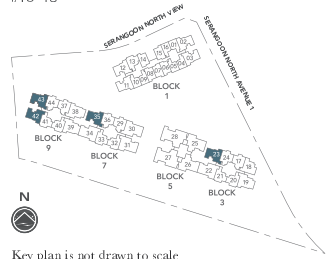
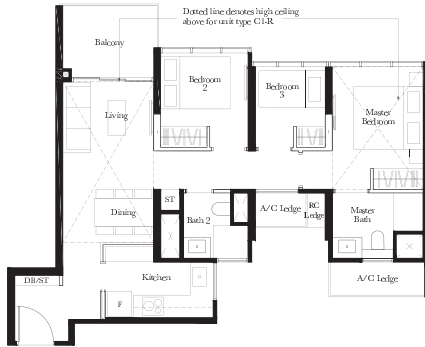
Including strata void area of 23 sq m / 248 sq ft above living, dining and master bedroom

Approximate 4.5 m floor to ceiling height at living, dining and master bedroom

BLK 3
#15-23*

BLK 7
#15-35*

BLK 9
#15-42
#15-43*



Key plan is not drawn to scale

AREA INCLUDES AIRCON (A/C) LEDGE, PRIVATE ENCLOSED SPACE (PES), BALCONY AND STRATA VOID AREA WHERE APPLICABLE. SOME UNITS ARE MIRROR IMAGES OF THE APARTMENT PLANS SHOWN IN THE BROCHURE. PLEASE REFER TO THE KEY PLAN FOR ORIENTATION. THE PLANS ARE SUBJECT TO CHANGE AS MAY BE APPROVED BY RELEVANT AUTHORITIES. ALL FLOOR PLANS ARE APPROXIMATE MEASUREMENTS ONLY AND ARE SUBJECT TO GOVERNMENT RESURVEY. THE BALCONY SHALL NOT BE ENCLOSED UNLESS WITH THE APPROVED BALCONY SCREEN. FOR AN ILLUSTRATION OF THE APPROVED BALCONY SCREEN, PLEASE REFER TO THE DIAGRAM ANNEXED HERETO AS "BALCONY SCREEN".

3-BEDROOM

TYPE C2-P

80 SQ M / 861 SQ FT

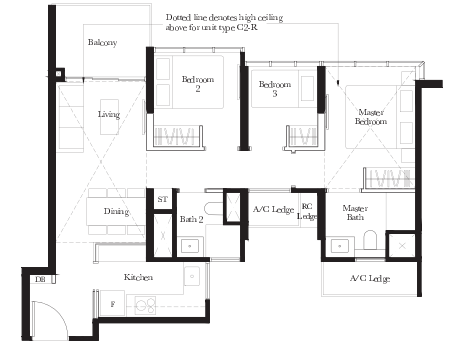
BLK 1
#02-02
#02-03*
#02-11
#02-12*



TYPE C2

73 SQ M / 786 SQ FT

BLK 1
#03-02 to #14-02
#03-03* to #14-03*
#03-11 to #14-11
#03-12* to #14-12*



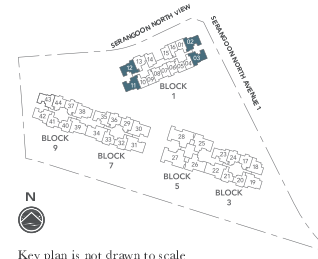
TYPE C2-R

96 SQ M / 1033 SQ FT

Including strata void area of 23 sq m / 248 sq ft above living, dining and master bedroom

Approximate 4.5 m floor to ceiling height at living, dining and master bedroom

BLK 1
#15-02
#15-03*
#15-11
#15-12*



Key plan is not drawn to scale

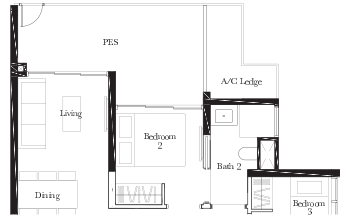
AREA INCLUDES AIRCON (A/C) LEDGE, PRIVATE ENCLOSED SPACE (PES), BALCONY AND STRATA VOID AREA WHERE APPLICABLE. SOME UNITS ARE MIRROR IMAGES OF THE APARTMENT PLANS SHOWN IN THE BROCHURE. PLEASE REFER TO THE KEY PLAN FOR ORIENTATION. THE PLANS ARE SUBJECT TO CHANGE AS MAY BE APPROVED BY RELEVANT AUTHORITIES. ALL FLOOR PLANS ARE APPROXIMATE MEASUREMENTS ONLY AND ARE SUBJECT TO GOVERNMENT RESURVEY. THE BALCONY SHALL NOT BE ENCLOSED UNLESS WITH THE APPROVED BALCONY SCREEN. FOR AN ILLUSTRATION OF THE APPROVED BALCONY SCREEN, PLEASE REFER TO THE DIAGRAM ANNEXED HERETO AS "BALCONY SCREEN".

3-BEDROOM

TYPE C3-P

82 SQ M / 883 SQ FT

BLK 3
#02-18



TYPE C3

75 SQ M / 807 SQ FT

BLK 3
#03-18 to #14-18

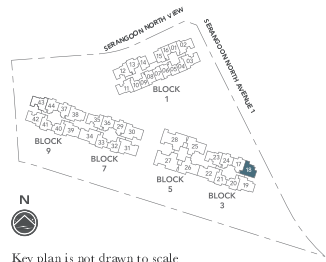
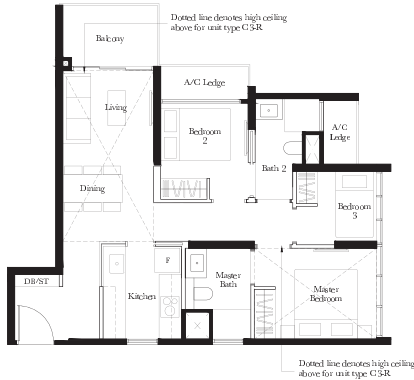
TYPE C3-R

99 SQ M / 1066 SQ FT

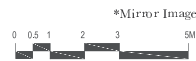
Including strata void area of 24 sq m / 258 sq ft above living, dining and master bedroom

Approximate 4.5 m floor to ceiling height at living, dining and master bedroom

BLK 3
#15-18



Key plan is not drawn to scale



AREA INCLUDES AIR-ZON (A/C LEDGE), PRIVATE ENCLOSED SPACE (PES), BALCONY AND STRATA VOID AREA WHERE APPLICABLE. SOME UNITS ARE MIRROR IMAGES OF THE APARTMENT PLANS SHOWN IN THE BROCHURE. PLEASE REFER TO THE KEY PLAN FOR ORIENTATION. THE PLANS ARE SUBJECT TO CHANGE AS MAY BE APPROVED BY RELEVANT AUTHORITIES. ALL FLOOR PLANS ARE APPROXIMATE MEASUREMENTS ONLY AND ARE SUBJECT TO GOVERNMENT RESURVEY. THE BALCONY SHALL NOT BE ENCLOSED UNLESS WITH THE APPROVED BALCONY SCREEN. FOR AN ILLUSTRATION OF THE APPROVED BALCONY SCREEN, PLEASE REFER TO THE DIAGRAM ANNEXED HERETO AS "BALCONY SCREEN".

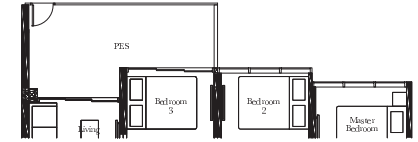
3-BEDROOM + STUDY

TYPE C4S-P

90 SQ M / 969 SQ FT

BLK 3
#02-19*

BLK 9
#02-38
#01-39*

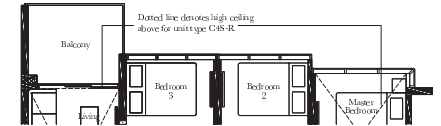


TYPE C4S

84 SQ M / 904 SQ FT

BLK 3
#03-19* to #14-19*

BLK 9
#03-38 to #14-38
#02-39* to #14-39*



Applicable to unit #19 at Block 3

TYPE C4S-R

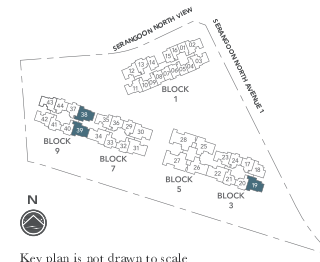
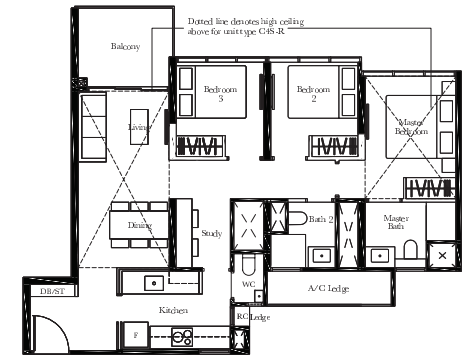
108 SQ M / 1163 SQ FT

Including strata void area of 24 sq m / 258 sq ft above living, dining and master bedroom

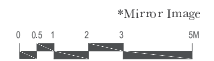
Approximate 4.5 m floor to ceiling height at living, dining and master bedroom

BLK 3
#15-19*

BLK 9
#15-38



Key plan is not drawn to scale

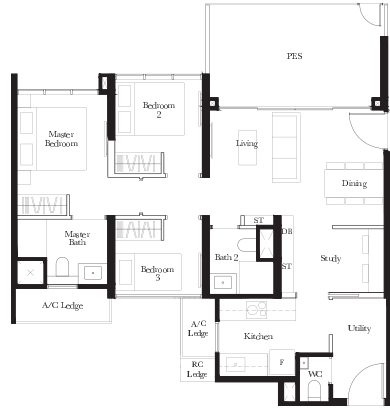


AREA INCLUDES AIR-ZON (A/C LEDGE), PRIVATE ENCLOSED SPACE (PES), BALCONY AND STRATA VOID AREA WHERE APPLICABLE. SOME UNITS ARE MIRROR IMAGES OF THE APARTMENT PLANS SHOWN IN THE BROCHURE. PLEASE REFER TO THE KEY PLAN FOR ORIENTATION. THE PLANS ARE SUBJECT TO CHANGE AS MAY BE APPROVED BY RELEVANT AUTHORITIES. ALL FLOOR PLANS ARE APPROXIMATE MEASUREMENTS ONLY AND ARE SUBJECT TO GOVERNMENT RESURVEY. THE BALCONY SHALL NOT BE ENCLOSED UNLESS WITH THE APPROVED BALCONY SCREEN. FOR AN ILLUSTRATION OF THE APPROVED BALCONY SCREEN, PLEASE REFER TO THE DIAGRAM ANNEXED HERETO AS "BALCONY SCREEN".

3-BEDROOM + STUDY

TYPE C5S-P 93 SQ M / 1001 SQ FT

BLK 5
#02-25*
#02-26

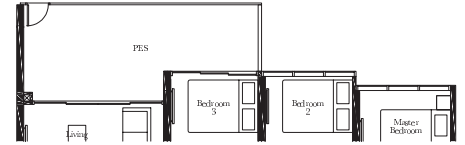


4-BEDROOM + STUDY

TYPE D1S-P 108 SQ M / 1163 SQ FT

BLK 3
#02-22

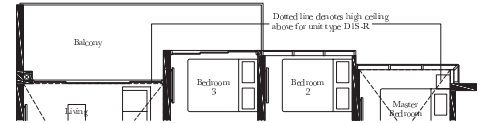
BLK 7
#02-30
#02-31*
#02-34



TYPE D1S 104 SQ M / 1119 SQ FT

BLK 3
#03-22 to #14-22

BLK 7
#03-30 to #14-30
#03-31* to #14-31*
#03-34 to #14-34



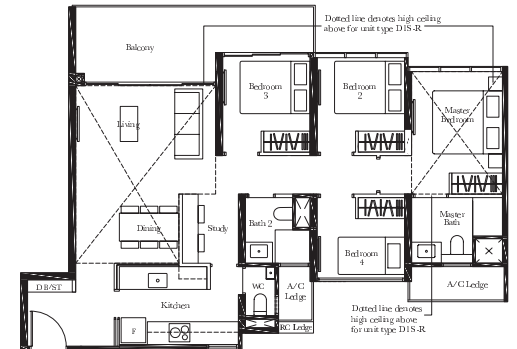
Applicable to unit #30 and #31 at Block 7

TYPE D1S-R 134 SQ M / 1442 SQ FT

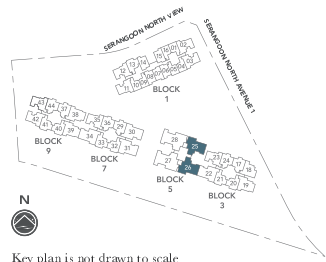
Including strata void area of 30 sq m / 323 sq ft above living, dining and master bedroom

Approximate 4.5 m floor to ceiling height at living, dining and master bedroom

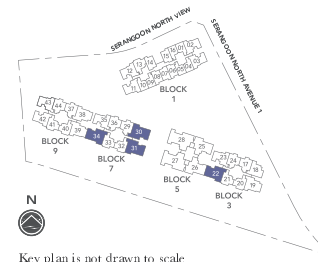
BLK 7
#15-30
#15-31*



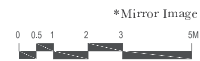
Dotted line denotes high ceiling above for unit type D1S-R



Key plan is not drawn to scale



Key plan is not drawn to scale



AREA INCLUDES AIR-CON (A/C) LEDGE, PRIVATE ENCLOSED SPACE (PES), BALCONY AND STRATA VOID AREA WHERE APPLICABLE. SOME UNITS ARE MIRROR IMAGES OF THE APARTMENT PLANS SHOWN IN THE BROCHURE. PLEASE REFER TO THE KEY PLAN FOR ORIENTATION. THE PLANS ARE SUBJECT TO CHANGE AS MAY BE APPROVED BY RELEVANT AUTHORITIES. ALL FLOOR PLANS ARE APPROXIMATE MEASUREMENTS ONLY AND ARE SUBJECT TO GOVERNMENT RESURVEY. THE BALCONY SHALL NOT BE ENCLOSED UNLESS WITH THE APPROVED BALCONY SCREEN. FOR AN ILLUSTRATION OF THE APPROVED BALCONY SCREEN, PLEASE REFER TO THE DIAGRAM ANNEXED HERETO AS "BALCONY SCREEN".

AREA INCLUDES AIR-CON (A/C) LEDGE, PRIVATE ENCLOSED SPACE (PES), BALCONY AND STRATA VOID AREA WHERE APPLICABLE. SOME UNITS ARE MIRROR IMAGES OF THE APARTMENT PLANS SHOWN IN THE BROCHURE. PLEASE REFER TO THE KEY PLAN FOR ORIENTATION. THE PLANS ARE SUBJECT TO CHANGE AS MAY BE APPROVED BY RELEVANT AUTHORITIES. ALL FLOOR PLANS ARE APPROXIMATE MEASUREMENTS ONLY AND ARE SUBJECT TO GOVERNMENT RESURVEY. THE BALCONY SHALL NOT BE ENCLOSED UNLESS WITH THE APPROVED BALCONY SCREEN. FOR AN ILLUSTRATION OF THE APPROVED BALCONY SCREEN, PLEASE REFER TO THE DIAGRAM ANNEXED HERETO AS "BALCONY SCREEN".

4-BEDROOM DELUXE

TYPE D2

111 SQ M / 1195 SQ FT

BLK 5

#03-25* to #14-25*
#03-26 to #14-26

TYPE D2-R

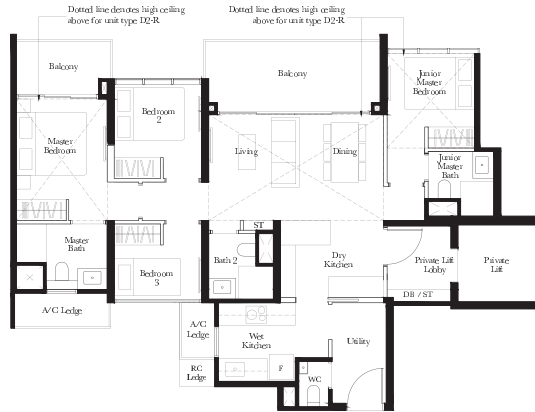
145 SQ M / 1561 SQ FT

Including strata void area of 34 sq m / 366 sq ft above living, dining, master bedroom and junior master bedroom

Approximate 4.5 m floor to ceiling height at living, dining, master bedroom and junior master bedroom

BLK 5

#15-25*



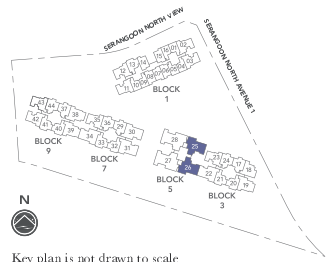
4-BEDROOM DELUXE

TYPE D3-P

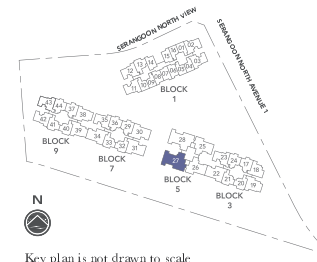
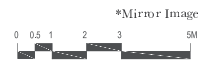
132 SQ M / 1421 SQ FT

BLK 5

#02-27



Key plan is not drawn to scale



Key plan is not drawn to scale



AREA INCLUDES AIR-CON (A/C) LEDGE, PRIVATE ENCLOSED SPACE (PES), BALCONY AND STRATA VOID AREA WHERE APPLICABLE. SOME UNITS ARE MIRROR IMAGES OF THE APARTMENT PLANS SHOWN IN THE BROCHURE. PLEASE REFER TO THE KEY PLAN FOR ORIENTATION. THE PLANS ARE SUBJECT TO CHANGE AS MAY BE APPROVED BY RELEVANT AUTHORITIES. ALL FLOOR PLANS ARE APPROXIMATE MEASUREMENTS ONLY AND ARE SUBJECT TO GOVERNMENT RESURVEY. THE BALCONY SHALL NOT BE ENCLOSED UNLESS WITH THE APPROVED BALCONY SCREEN. FOR AN ILLUSTRATION OF THE APPROVED BALCONY SCREEN, PLEASE REFER TO THE DIAGRAM ANNEXED HERETO AS "BALCONY SCREEN".

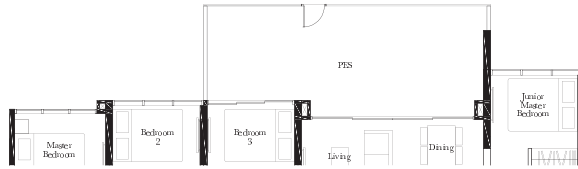
AREA INCLUDES AIR-CON (A/C) LEDGE, PRIVATE ENCLOSED SPACE (PES), BALCONY AND STRATA VOID AREA WHERE APPLICABLE. SOME UNITS ARE MIRROR IMAGES OF THE APARTMENT PLANS SHOWN IN THE BROCHURE. PLEASE REFER TO THE KEY PLAN FOR ORIENTATION. THE PLANS ARE SUBJECT TO CHANGE AS MAY BE APPROVED BY RELEVANT AUTHORITIES. ALL FLOOR PLANS ARE APPROXIMATE MEASUREMENTS ONLY AND ARE SUBJECT TO GOVERNMENT RESURVEY. THE BALCONY SHALL NOT BE ENCLOSED UNLESS WITH THE APPROVED BALCONY SCREEN. FOR AN ILLUSTRATION OF THE APPROVED BALCONY SCREEN, PLEASE REFER TO THE DIAGRAM ANNEXED HERETO AS "BALCONY SCREEN".

5-BEDROOM

TYPE E1-P

150 SQ M / 1615 SQ FT

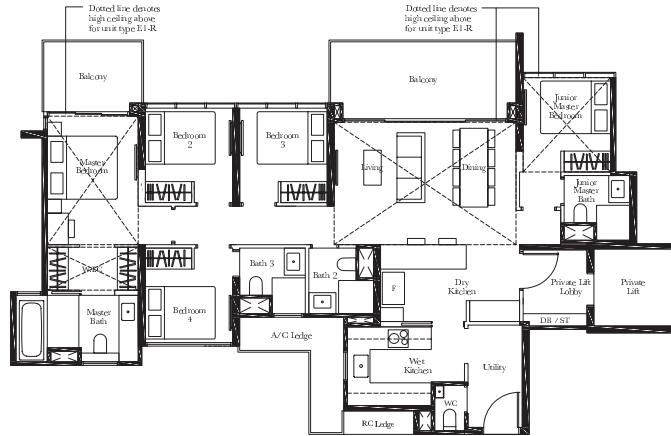
BLK 5
#02-28



TYPE E1

143 SQ M / 1539 SQ FT

BLK 5
#03-27* to #14-27*
#03-28 to #14-28

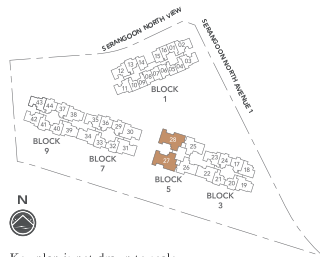


TYPE E1-R

184 SQ M / 1981 SQ FT

Including strata void area of 41 sq m / 441 sq ft above living, dining, master bedroom, walk-in-closet, and junior master bedroom. Approximate 4.5 m floor to ceiling height at living, dining, master bedroom, walk-in-closet, and junior master bedroom.

BLK 5
#15-27*
#15-28



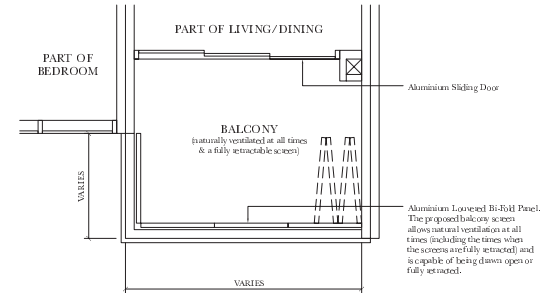
Key plan is not drawn to scale



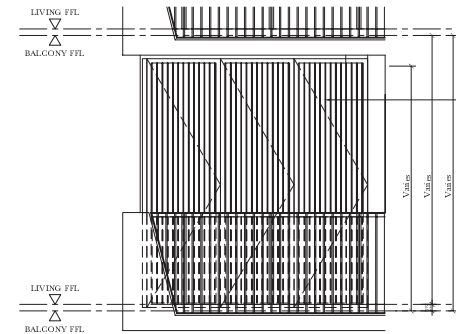
AREA INCLUDES AIR/COND. PLDGE, PRIVATE ENCLOSED SPACE (PES), BALCONY AND STRATA VOID AREA WHERE APPLICABLE. SOME UNITS ARE MIRROR IMAGES OF THE APARTMENT PLANS SHOWN IN THE BROCHURE. PLEASE REFER TO THE KEY PLAN FOR ORIENTATION. THE PLANS ARE SUBJECT TO CHANGE AS MAY BE APPROVED BY RELEVANT AUTHORITIES. ALL FLOOR PLANS ARE APPROXIMATE MEASUREMENTS ONLY AND ARE SUBJECT TO GOVERNMENT RE-SURVEY. THE BALCONY SHALL NOT BE ENCLOSED UNLESS WITH THE APPROVED BALCONY SCREEN. FOR AN ILLUSTRATION OF THE APPROVED BALCONY SCREEN, PLEASE REFER TO THE DIAGRAM ANNEXED HERETO AS "BALCONY SCREEN".

BALCONY SCREEN

TYPICAL RETRACTABLE BALCONY SCREEN



TYPICAL RETRACTABLE BALCONY SCREEN-ELEVATION



TYPICAL BALCONY SCREEN SECTION

